

BEFORE PRINTING, YOU CAN TRANSLATE THE PDF BY USING GOOGLE TRANSLATE FOR DOCUMENTS.



+EMPLOYABILITY

INSTRUCTIONS

+EMPLOYABILITY_A3.PDF

CONTENT

The pdf-file contains 30 pages to print two-sided on A3-paper.



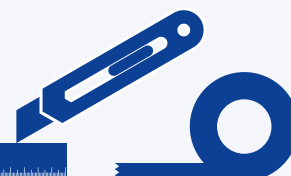
YOU WILL PRINT

- 1 board
- 6 game pieces
- 6 palettes
- 144 cards with questions and tasks within 6 different topics: Communication, Problem Solving, Creative Thinking, Self Compassion, Open Minded and Focus
- 1 facilitator-manual



MATERIAL - YOU NEED

- 13 sheets of A3-paper for the board, the cards and the palettes. We recommend thicker paper, 160g or more.
- Two sheets of A3-paper in normal quality (about 80g): One sheet for the manual and one sheet for the game pieces.
- A cutter and a long ruler (or anything straight you can cut along).
- Transparent tape.



PRINT-SETTINGS

Print on A3-paper. For page 2-29 choose «two-sided, flip on short edge» to make sure that the front and back are in the same direction.

NB! The last two pages, 30-31, are for the facilitator-manual. Choose «two-sided, flip on long edge».

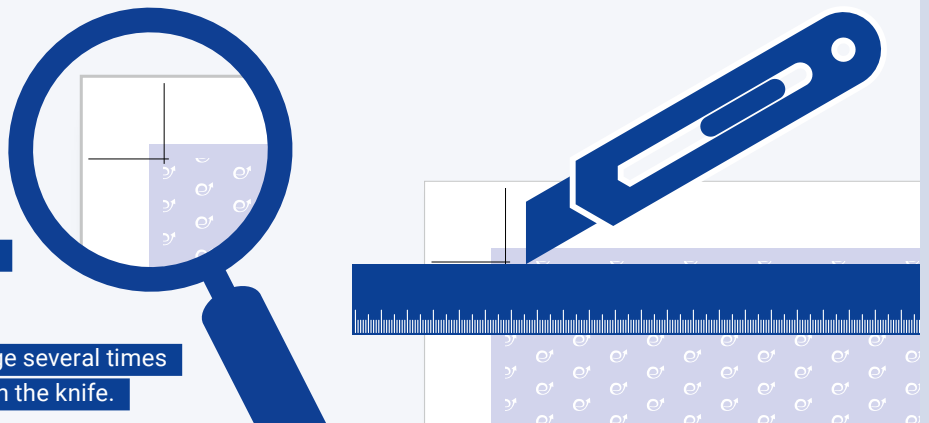


CUTTING

- You'll find cutting-marks on all the prints.

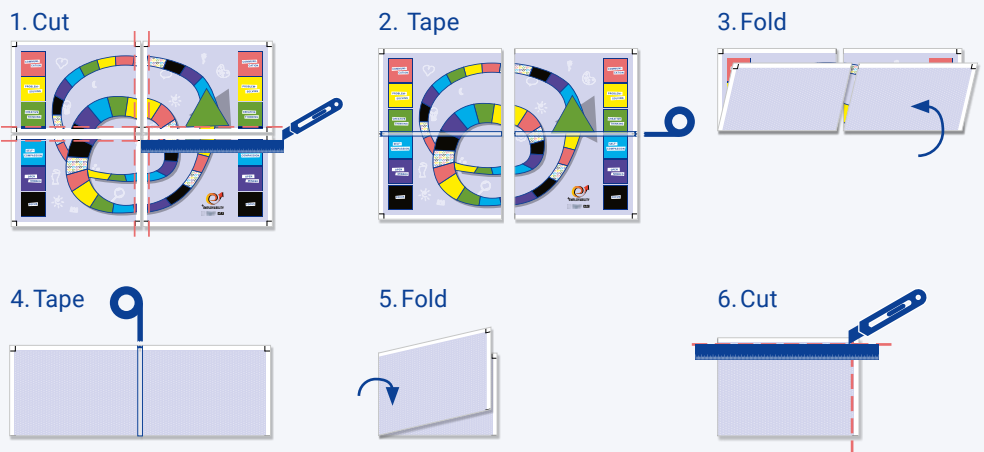
TIPS FOR USING THE CUTTER:

- Make sure that the blade is sharp. You might have to break off the first cutter blade.
- Place the backside of the ruler at the cutting-marks, and cut along the backside.
- How to get a straight edge: Cut along the edge several times with a light hand. Avoid too much pressure on the knife.



ASSEMBLING THE BOARD

- Cut off the inner edges first.
- Tape the two long inner edges separate with a transparent tape. Only tape on one side of the paper, so you can fold the board.
- Fold the two taped sides individually.
- Tape only the one short edge on the back of the taped sides.
- Fold the board over this tape.
- Cut the outer edges.



ASSEMBLING THE GAME PIECES

- Cut out the coloured sections.
- Roll the paper to cylinders, and tape them.

